

1080P EPTZ PIR Wifi

Floodlight Camera



Key Features

- 1080P,2MP High Definition.
- Its 180° panoramic field-of-view and enhanced night vision will let you monitor all your blind spots day and night.
- Built-in PIR sensor to protect the intrusion.
- With Built-in microphone and speaker,so you can see, hear and speak to anyone on your yard from anywhere.
- Floodlight Camcorder sends instant alerts to your smartphone or tablet whenever it detects motion.
- With built-in 16GB TF card, you can check the recorded video by dragging the timeline from the Apps.

Applicable scene

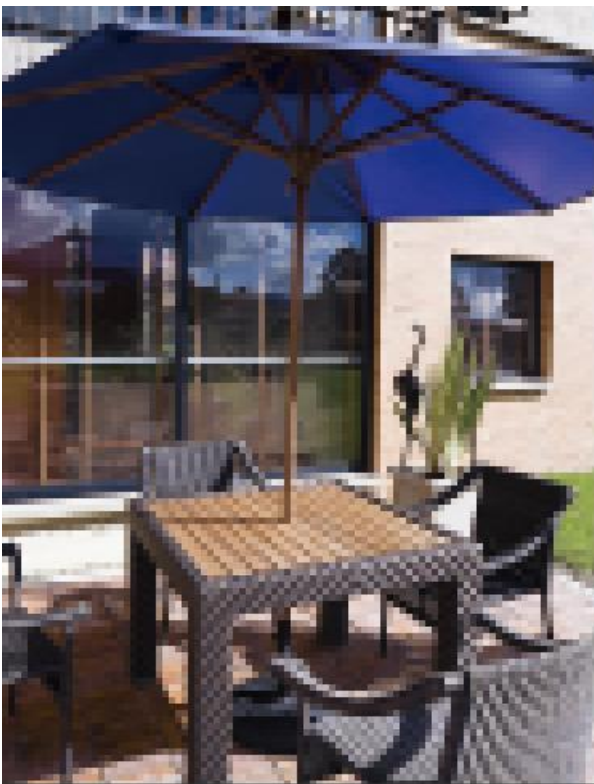
Floodlight Camcorder easily replaces existing wired floodlights and connects to standard junction boxes. Protect your home with the motion-activated security camera with built-in floodlights and two-way audio.

Technical parameters

Model	
System	
Sensor	1/2.7" Full-HD 1080p CMOS
Chipset	Hi3518E V200
Operation System	Embedded Linux
Camera	
Resolution	1920×1080 Full HD
Lens	1/ 2.7" 5 Mega Panoramic Lens
Angle of Field(D H V)	190° 142° 102°
Day/Night	IR Cut Filter
IR Distance	10m
Video Compression	H.264
Audio Encoding	AAC G.726
Network	802.11 b/g/n @ 2.4GHz
Light	
Led type	SMD
CRI	80
CCT	3000-6500 K
Luminous Flux	1750Lm

Power	20W
Lifespan	50000Hours
Miscellaneous	
Alarm	PIR Motion Sensor
Detection Distance	7m
Microphone	Built-in
Speaker	Built-in
Network Configuration	Sound Wave
Protocols	TCP/IP, HTTP, TCP,UDP, SMTP, DHCP, DNS, P2P
Storage	Support Micro SD Card
IP Rate	IP55
Requirements	
Power	AC110~240V
Working Temperature	-30℃ ~+50℃
Working Humidity	≤80%RH





1080P HIGH DEFINITION

CAN ZOOM IN TO GET A CLEARER IMAGE, SUPPORT AUTO CRUISE



● SMALL FIELD OF VISION



● WIDE FIELD OF VISION

180° WIDE PANORAMIC VIEW

WATCH YOUR YARD OR DRIVE WAY WITHOUT BLIND SPOTS.



FLOODLIGHT

THE LIGHT IS ON AUTOMATICALLY WHEN PIR SENSOR IS TRIGGERED
THE LIGHT CAN BE TURNED ON/OFF FROM MOBILE APPS REMOTELY



TWO WAY AUDIO

TALK TO VISITORS OR STRANGERS APPROACHING YOUR HOUSE WHEN YOU ARE OUT



MULTIPLE PLATFORMS

MOBILE PHONE TABLET

DRAG TIMELINE TO REPLAY THE RECORDED VIDEO



PIR AND MOTION DETECTION

VIDEO IS RECORDED WHEN MOTION IS DETECTED

PUSH ALARM MESSAGE WILL BE SENT TO MOBILE.