

# 20X 5MP Starlight 4.5 inch

## POE WiFi IP Camera



### Key Features

- 1/3 SONY IMAX starlight 5MP 335 Super illuminance COMS image sensor +Hi3516EV200 CPU.
- Resolution:2560\*1920,2560\*1440,2048\*1536,1920\*1080,1280\*720.
- Three streams are provided and resolution, frame rate, bit rate adjustable.
- First stream is used for LAN or WAN HD monitoring.
- Second stream is used for remote user monitoring preview.
- Third stream is used for Remote monitoring of poor network speed
- LENS: 4.7-94mm 20x zoom lens.
- Support 2.4G WIFI/802.11b/g/n wireless connection.
- Support for humanoid recognition and automatic tracking
- Support wireless wifi hotspot(AP)
- Support 1-64GB SD card storage(need additional sd card).
- Build in Mic and Support Audio output.
- Support SD card remote Motion detecting and timing snapshot.
- Support for audible alarms: dog barking, alarms and custom audible alarm outputs
- Offer 500M SD card storage space for image snapshot(Motion detection snapshot and timing snapshot)
- Support Mobile phone remote preview and playback, and support mobile phone local snapshot and record.
- P2P mobile phone remote It is the industry has the fastest connection speed and can open the image in 2 seconds.and support phone App alarm info sending.

- Support VLC player by RTSP, Support Global standard ONVIF.
- Support Static IP and DHCP.
- Support up to 12 users browsing at the same time(Each stream supports four users).
- Support remote alarm linkage, sending email attaching 3 pictures and alarm information sent to the APP.
- Build in Motion Detection for 4 windows , Privacy Mask , image snapshot , Title OSD.
- Alarm function support: SD card recording, SD card capture, Email mailing, FTP image uploading, voice alarm, APP mobile push, etc.
- Onvif Compliant,support Blue Iris software.
- Smart Phone Support: iPhone, Windows Mobile, BlackBerry, Symbian, Android.
- Support Remote images and video sharing.
- Mobile APP support:about device review,system setting>Password setting,OSD setting,Video setting,Timing Capture,Mirror setting,IR led setting,Email setting,FTP setting,Alarm setting,Wifi setting,Network setting,Audio seting,Recording setting,SD card setting,cloud upgrade etc.
- A mobile phone can satisfy all your fantasies about cameras

## **PTZ Speed dome Key Features**

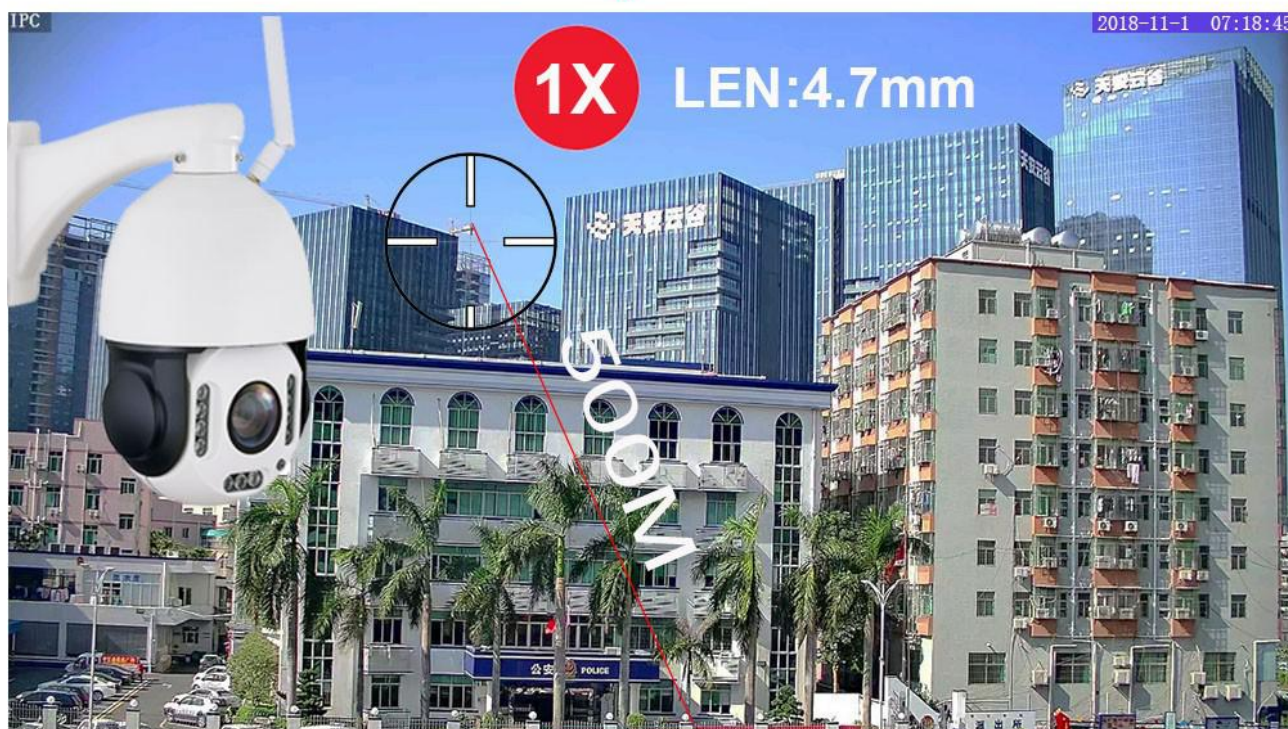
- 11x PCS High power infrared LED, IR night distance 150M.
- 360 ° Horizontal rotation , 95° vertical rotation .
- Support 256 preset Set and call.
- Support preset delete.
- Support Auto scan(Horizontal rotation). the Horizontal of 360° clockwise.
- Automatic scanning,and support modify speed of Auto scan.
- Support 5 sets of preset cruise function,Support Modify the stay time of the Cruise and Modify speed of the Cruise
- Left and right limit scan settings.Support Modify the stay time of the >scan and Modify speed of the scan
- Support Idle action settings
- Support Watch(home) position setting
- Support IR light Control settings:Open ,Close,Auto,IR detection threshold setting,IR brightness adjustment.

## Technical parameters

Model	SVN-IP50SPW
Resolution	5MP:2560*1920,4MP:2560*1440,3MP:2048*1536,2MP:1920*1080,720P:1280*720
System	Linux
Processor	HI 3516E V200
Image sensor	1/2.8 SONY IMAX 335 Super Low illuminance image sensor
Video Codec	H.265 /264main profile and baseline
LEN	20x zoom
IR LED	11 PCS IR LED
IR distance	150M
Support mobile phone	All smart phone
P2P Cloud connection	Mobile PHONE APP,browser,P2P Client global Internet
Video Resolution	First stream:2560*1920,2560*1440,2048*1536,1920*1080,1280*720
	Second stream:1280*720,704*576,640*380
	Three stream:320x176
Frame rate	5MP:15fps,4MP:25fps,3MP:25fps,1080P:25fps,720P:25fps
Bit rate	32-8192kbps
Min.Lux	Color>0.03 LUX B&W=0 LUX
SD card	Support MAX64GB
LAN Client softwawre	IP Camera Client,Blue Iris software and other IP camera client with ONVIF
P2P Client	No matter when, no matter where, as long as there is network, can you open the computer and install the P2P software , you can easily access and control your remote cameras. And this is don't need any network configuration
Support Browser	MS Internet Explorer,Firefox,google browser,and support record and playback in Browser,and support Management 9 cameras in the same Browser
OSD	Support OSD character stack.You can set the time and channel name display or not
Image settings	You can adjust the parameters of image Brightness, Saturation, Contrast, Sharpness, Exposure, Gamma, Distortion, Flip, Mirror, WDR, Shutter and Noise
Audio	Support G711 Coding format,and support 3 streams audio in and output
IP address	Support Automatic access and customization ip address
LAN interface	Wifi wireless ,RJ45 10Base-T/100Base-TX, WIFI/802.11b/g/n wireless
Wireless	Support 2.4G WIFI IEEE802.11B/G/N ,Security mode:WEB ,WPA+PSK,WPA2+PSK
WIFI hotspot(PA)	Support Wifi hotspot,If you don't have a network, you can use your phone to connect to your camera by wireless hotspot.
Network Protocol	TCP/IP, https, TCP, ICMP, UDP, ARP,IGMP, SMTP, FTP, DHCP, DNS, DDNS, NTP, UPNP, RTSP
Access Protocol	ONVIF
DDNS	Support third-party DDNS parsing services.
Mobile App	Support setting:about device review,system setting,Password setting,OSD setting,Video setting,Timing Capture,Mirror setting,IR led setting,Email setting,FTP setting,Alarm setting,Wifi setting,Network setting,Audio seting,Recording setting,SD card setting,cloud upgrade etc.
Snapshot	Support Remote timing snapshot,and support mobile view images
	Moving detection snapshot
Time	Support :time.windows.com,time.nist.gov ,time.kriss.re.kr,time.nuri.net etc. ,Network Time Protocol
Motion detection	At most 4 respective regions
Alarm linkage	E-mail Alarm and Send with Picture , Save Picture on the FTP Server , Save Video on the FTP Server , Relay out , Save Picture on the SD Card , Save Video on the SD card ,alarm

	send message to mobile phone APP
Record	Support computer local record,SD card record,Browser record,FTP record,P2P client software record.Video recording includes: timing record,motion detection record,Schedule record,alarm record
Playback	Support SD card record playback,support SD card images playback
User management	Provide three levels of rights management (admin, user, guest), support to modify login user name and password
Inter Power、consumption	DC12V 3A
Working temperature	-40℃ ~ +85℃
Working Humidity	-10-95%

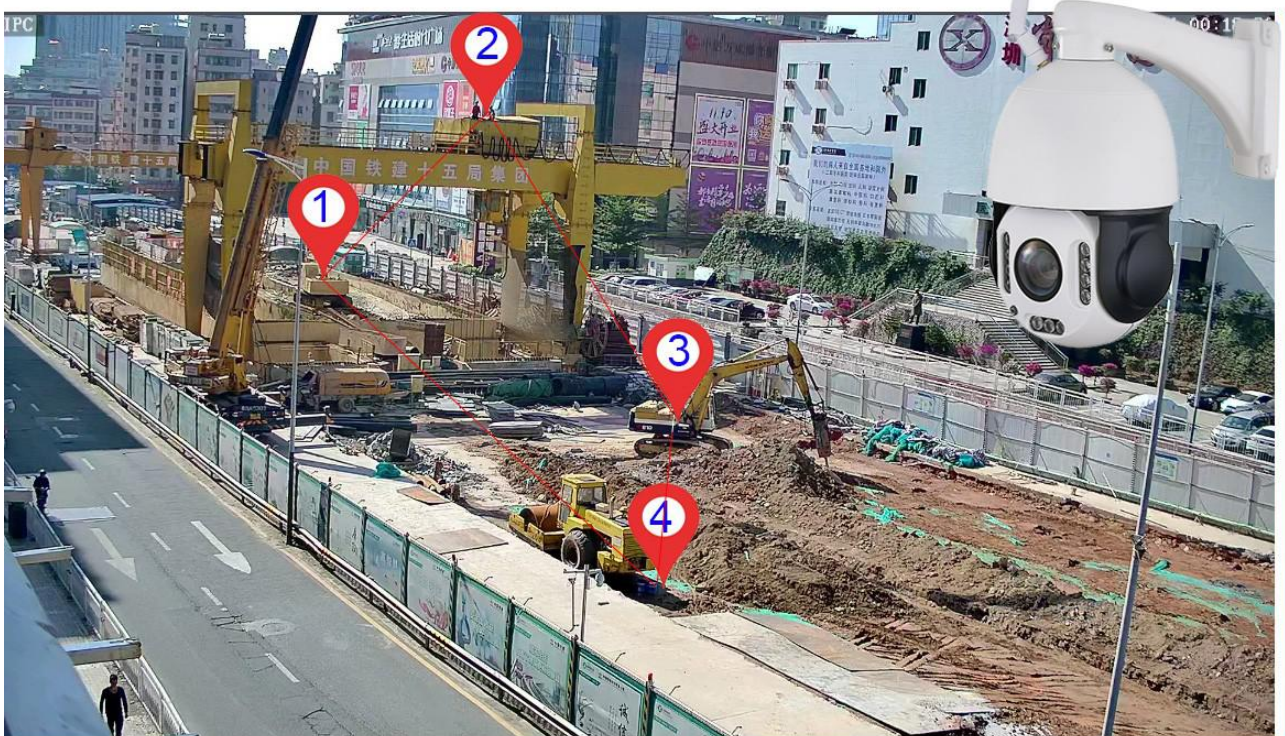
## True 20x optical zoom







Use cruise function to Surveillance construction sites



- zoom +/-
- focus +/-
- set/call preset
- cruise
- home position

**Open Cruise / Stop Cruise On APP  
So Easy!**



## Alarm outputs: Option



**Dog barking**

**Siren**

**Custom sound** (Recording via APP)

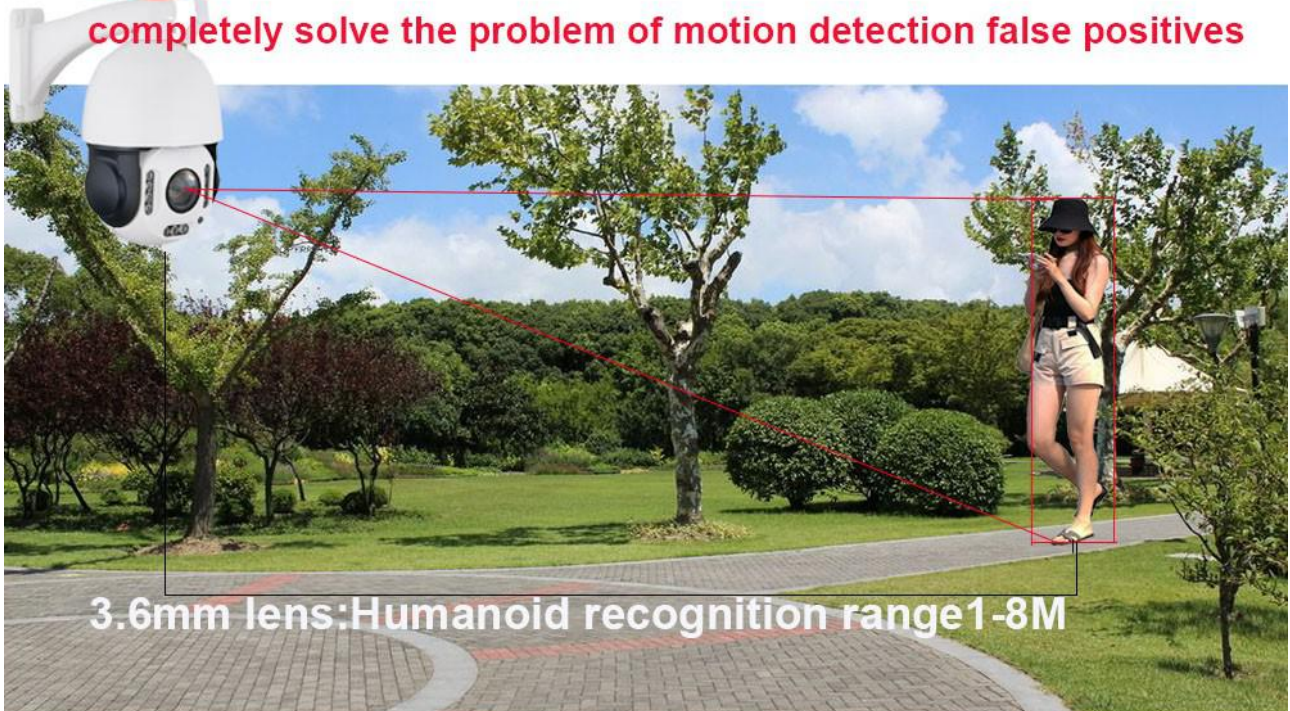


**95%**

## Alarm accuracy

**Motion detection + humanoid recognition**

**completely solve the problem of motion detection false positives**



**Humanoid recognition alarm function, when the camera detects the human shape, the camera Open the alarm function: SD recording, SD Capture, voice alarm, FTP upload, message push, etc.**



## ***Auto tracking + Humanoid recognition alarm***

When the camera detects a moving object, the camera turns on the automatic tracking function. When the camera detects the human shape during tracking, the camera will open the alarm function. Alarm functions include: SD card recording, SD card capture, alarm sound output, sending E-mail, FTP picture upload, APP message push.

