

1000M Laser 1080P 20X IP67

Bird Repellent Device



Key Features

- Laser wavelength: 520nm, Laser power: 1000mW, Irradiation distance: 1000m;
- Laser color: green/white, customizable;
- 1080P video resolution to observe bird categories.
- Beam type: Spot, one-line (optional)
- Operating range: horizontal 360° continuous, vertical -90°~+45° rotation;
- Protection grade IP67, lightning-proof, surge-proof, electromagnetic shock-proof.
- Support timed task preset points, pattern scanning, renewal scanning, left and right scanning.

Product features

Birds perceive the moving laser light as a physical threat and flee immediately when the beam passes by. This solution is proven to reduce bird nuisance by more than 70%. Bird habituation doesn't occur. The system can be programmed and monitored through software.

Bird Repellent Device is a special wavelength laser designed specifically for bird-driving Pan&Tilt, the role of long distance, through the remote control system to achieve long-distance real-time control; in the work without noise and other pollution, will not interfere with other working equipment.

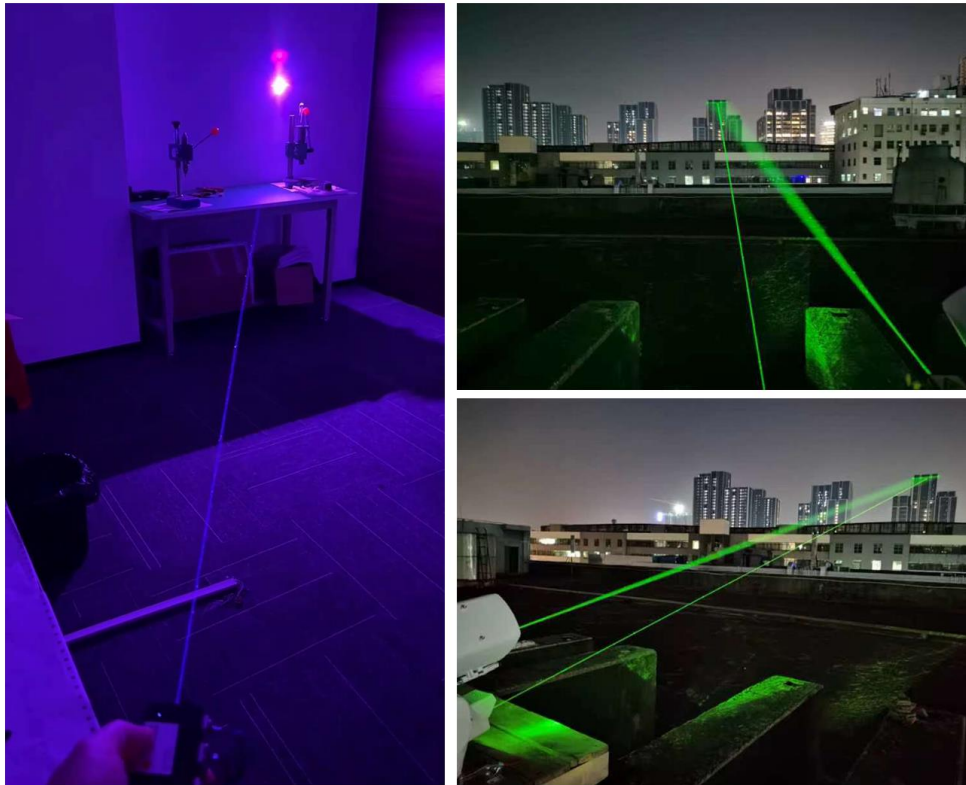
It is designed with IP67 protection grade to meet the needs of bird repelling equipment used outdoors all year round in airports, orchards, farmlands, warehouses and power grids, power transmission and other places.

Technical parameters

Model	SV-850BD12	SV-850BD22	SV-850BD02
Camera function			
Image sensor	1/2.8" Progressive Scan CMOS		
Effective Pixels	1080P		
Minimum Illumination	Color: 0.001 Lux @(F1.69, AGC ON); B&W: 0.0005 Lux @(F1.69, AGC ON)		
Main stream resolution	50Hz: 25fps (1920×1080, 1280×960, 1280×720); 60Hz: 30fps (1920×1080, 1280×960, 1280×720)		
Focal length	5.5-110mm, 20x optical zoom		
Aperture	F1.69-F3.72		
Horizontal field of view	45° - 3° (wide angle - telescopic)		
Close-up distance	100mm~1500mm (wide angle - telescopic)		
Day / night conversion mode	ICR infrared filter type		
Laser function			
Laser Type	Continuous, intermittent laser		

Laser wavelength	520±5nm		R638\G525\B450nm
Laser beam type	Circular light spot	One line	Circular light spot
Laser irradiation distance	>1000m	>300m	>500m
Output power	≥1000mW		≥3000mW
Laser color	Green		White
Operating Voltage	DC12V±10%		
Pan&Tilt Features			
Rotation range	Horizontal: 360° continuous, vertical: -90 to 45°		
Rotation speed	Horizontal: 0.1~100°/S, Vertical: 0.1~50°/S		
Positioning accuracy	0.1°±50%		
Preset position	255		
3D positioning	Support frame enlargement, target locking field of view center function		
Auto Cruise	Support focal length and head speed matching		
Power failure memory	Support power-off state memory function, automatically return to the Pan&Tilt and lens state before power-off after power on		
Watch function	On/Off, preset point/cruise scan can be called automatically after staying idle for a specified time (including the idle state entered after power-up)		
Remote Upgrade	Support both movement and Pan&Tilt remote upgrade (related to movement)		
Real-time angle back transmission	Support real-time angle return or query angle return function		
Information Display	Support		
Angle control	Support		
Smart Wiper	Remote intelligent control (optional)		
Fan/Heating	Real-time temperature detection, pure physical detection		
Waterproof respirator	Built-in 2 waterproof respirators to reduce fogging and condensation		
Communication Baud Rate	2400/4800/9600/19200bps		
Communication Interface	RS485+RS232		
Communication protocols	PELCO+VISCA		
Network Services			
Network Protocols	TCP/IP, ICMP, HTTP, HTTPS, FTP, DHCP, DNS, RTP, RTSP, RTCP, NTP, SMTP, SNMP, IPv6		
Access Protocol	ONVIF(PROFILE S,PROFILE G)		
Pan&Tilt Interface			
Network Interface	RJ45 10/100Base-T		
Audio Interface	1-channel audio input, 1-channel audio output		
Alarm interface	2-channel alarm input/2-channel relay output		
Analog video interface	1 channel BNC,75ohm		
External 485 interface	Support adaptive Pelco-P, Pelco-D and other protocols		
Ground Line	1 channel		
General			
Power supply	DC24V \ AC24V / 3.0A		
Power consumption	<50W (laser start)		
Working environment temperature	-40℃ ~ 60℃		
Humidity of working environment	0~95% (non-condensing)		
Protection level	IP67, built-in 4000V lightning, surge and surge protection		
Installation method	Column-mounted, wall-mounted, corner-mounted		
Dimensions (L, W, H)	L355mm×W204mm×H443mm		
Weight	9kg		
Load weight	≤4kg (including movement shield)		

Laser irradiation effect



Dimension

