

4.5"20X 8MP Auto Tracking Vehicle

Human Detection POE IP PTZ Camera



Key Features

- 8MP (3840*2160@30fps) Progressive Scan SONY415 CMOS Sensor.
- 20X Optical Zoom, Aperture value: F2.5-3.8, HOV: 52° - 3.3°.
- Pan: 360° continuous; 0.1~30°/S, Tilt: 0°~93°; 0.1°~15°/S, Preset: 220.
- Support Human Motion Tracking, Motion Detection, Vehicle Detection.
- 4.5 inch Mini Speed Dome, Two-way Audio, 4 Dot Matrix IR LED + 2 High-Power Laser Lights + 4 Warm Full-Color Lights 50M IR Distance 80M-100M
- IP66 Waterproof, Power supply: DC 12V or POE 48V.
- Support Android / IOS Smart Phone Remote Control, strong setting via App

Technical parameters

Model	SVN-20HD68F
Basic Parameters	
DSP	Hi3516CV610
Image Sensor	1/2.8" SONY IMX415 image sensor
Min. illumination	0.03Lux@(F1.8, AGC ON), 3.0 Lux with IR
Noise reduction	2D & 3D noise reduction
Image Settings	Support automatic white balance, digital wide dynamic, backlight compensation, adjustable brightness, contrast, chromaticity and other parameters;
General Function	Horizontal rotation, vertical rotation, preset cruise, 360 ° scan, AB scan
Lightning protection	6KV lightning surge protection
Business function	Support OSD, real-time video transmission, intelligent detection alarm linkage and other functions
Web login	Built in web 2.0 pages, supporting non IE core browsers such as Edge, Chrome, Safari, Firefox, etc
Lens	
Focal length	5.98 ~ 93.9 mm ± 5%(20X Optical Zoom)
Field of view angle	FOV: 59.36°-3.84°; H FOV: 52.12°-3.36°, V FOV: 29.75°-1.9°
Aperture	F2.57(Wide) ~ F3.85(Tele) ± 5%
PTZ	
Control angle	Horizontal: 0 °~360 °; Vertical: 0-93 °
Control speed	Horizontal: 0 °~30 °/s Vertical: 0 °~15 °/s

Preset	220
Scan/Cruise	Supports 360 ° scanning, A-B two-point scanning, and preset point cruising
Automatic tracking of effective range	3-50m
Video	
Encoding format	H.264, H.265, H.265+
Resolution	Main stream: 4K (3840 * 2160) @ 30FPS/6MP (3200 * 1800) @ 30FPS /5MP (2880*1620)/4MP (2560*1440)/3MP (2304*1296)/2MP (1920*1080)
	Sub stream: 720P/448P (800 * 448)/360P (640 * 360)/CIF (352 * 288)
Audio	
Audio processing	G.711A, G.711U
Audio function	1 audio input/1 audio output;
Smart Application	
Electronic fence	Support detecting human/vehicle shapes, and the device will sound an alarm after entering the alert area;
Boundary Detection	Support detection of human/vehicle shapes, support A ->B, B ->A, A<->B direction detection
Off duty detection	Support setting up detection areas, where the device will sound an alarm after personnel leave for a certain period of time, and the alarm will stop when they return;
Passenger flow statistics	Support counting the number of people entering and leaving, and real-time overlay of OSD on the screen; Daily data available;
Humanoid tracking	Support humanoid tracking function, automatically track after detecting personnel; Electronic fence/boundary detection needs to be activated first;
Voice alarm	Support linked voice broadcasting, with customizable recording of voice content;
NVR linkage	Support functions such as linked video recorder large screen, local voice, AI recording, and push notifications;
Network	
Network protocol	ONVIF, P2P, CGI, HTTP, TCP/IP, IPv4, RTSP, UDP, NTP, DHCP, DNS
Access Protocol	ONVIF protocol/Private protocol/CGI
Interface	
Network Interface	1 RJ45 Ethernet interface, 10/100M adaptive, 8KV anti-static capability
Remote monitoring	
Remote monitoring	Mobile monitoring (iOS, Android); APP: HiEasy; PC client: EasyVMS
Device Sharing	Support sharing function, the app can share up to 16 people
Fill light	
IR irradiation distance	80-100M ,4 Dot Matrix IR LED + 2 High-Power Laser Lights
Full color light/warm light	50M, 4 Warm Full-Color Lights
General specifications	
Power supply method	Power adapter DC: 12V3A
Power interface type	Φ 5.5mm round mouth
POE (optional)	Support 1236/4578 power supply
Device power consumption	DC:12V, The maximum current is about 1.2A, and the maximum power consumption is about 14.4W
Operating Temperature	Turn on the fill light -30 °C~45 °C, turn off the fill light: -30 °C~55 °C
Restore factory settings	Support
Material	Combination of metal structural components and plastic structural components
Size	Product size: 136 * 136 * 230mm; Packaging size: 185 * 185 * 285mm
weight	Net weight: approximately 1.56KG; Gross weight: approximately 2.24KG
Protection	IP66
Packaging accessories	Waterproof cap x1, instruction manual x1, certificate of conformity x1, warranty card x1 (not included in foreign countries), screw package x1, Bracket x1, power supply x1

Automatic Cruise & Human Tracking

Support preset cruise point, time, and speed to patrol around your customized path

Electronic Fence:

Support detecting human/vehicle shapes, and the device will sound an alarm after entering the alert area.

Cross Border Detection

Support detection of human/vehicle shapes, support A ->B, B ->A, A<->B direction detection.

Off Duty Detection

Support setting up detection areas, where the device will sound an alarm after personnel leave for a certain period of time, and the alarm will stop when they return.

Passenger Flow Statistics

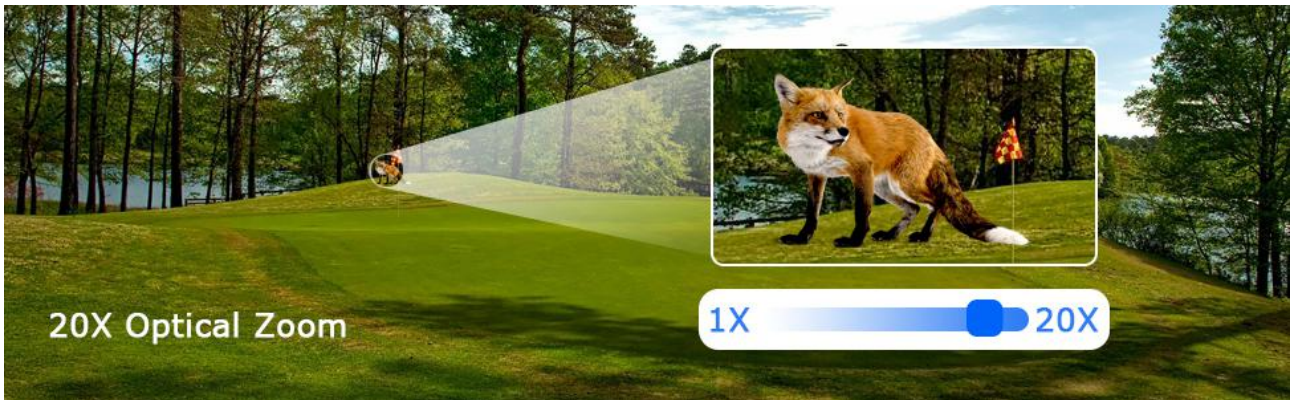
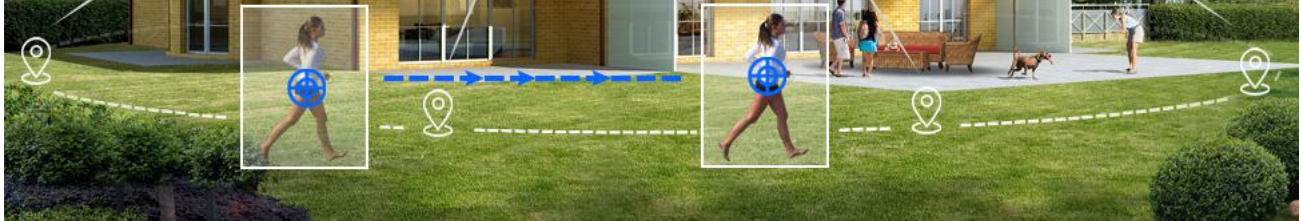
Support counting the number of people entering and leaving, and real-time overlay of OSD on the screen.

Humanoid Tracking

Support humanoid tracking function, automatically track after detecting personnel.

Voice Alarm

Support linked voice broadcasting, with customizable recording of voice content.



SIZE (mm)

