

4.5" 20X 5MP AI Vehicle/ Human

Detection POE IP PTZ Camera



Key Features

- 5MP (2960*1664) 25fps.
- 1/2.7"5MP Low Lux progressive scan CMOS.
- Color: 0.008Lux@ (F1.6, AGC ON), B/W: 0Lux with IR.
- Support 6-120mm optical lens.
- 25fps @ 5MP (H.265/H.264).
- H.264/H.265 codec supported, multiple streaming.
- Support 3D DNR, DWDR, BLC, HLC, Defog.
- Support Motion Detection, Human/Vehicle Intrusion Alarm, Line Cross, Loitering, Area Enter/Leave, Facial Recognition, Facial Capture, People Count Statistics, Hard Hat Detection, and Crowd Detection.
- Support 1ch alarm output, 1ch alarm input
- Support 1ch audio input, 1ch audio output and 1ch built-in speaker
- Support Local TF Storage (Max. up to 512GB)
- IR Light Range: 100 Meters

Technical parameters

Model	
CAMERA	
System Structure	Embedded Linux Design, watchdog, Support RTC real time clock Dual Core Cortex-A7@950MHz+2Gb RAM + 1Tops NPU+FLASH: 2Gb ROM
Image Sensor	1/2.7" 5MP Low Lux Progressive Scan CMOS
Dynamic Range	HDR Mode: >100dB, Linear Mode: 83dB
SNR	39dB
Min. Illumination	Color: 0.008Lux@ (F2.57, AGC ON), B/W: 0Lux with IR
Shutter	(1/10 ~ 1/20000) Support auto and manual electronic shutter
Day/Night Switch	Auto/Manual/Schedule
BLC	Support, auto adjust
3D DNR	Support, auto adjust
LENS	
Focal	6mm-120mm
Iris	F2.57~F3.85
FOV	Wide-Tele; Horizontal: 52.12° ~3.36°, Vertical: 29.75°~1.9°, Diagonal: 59.36°~3.84°
PTZ	
Pan Range	Horizontal 360° continuous rotate
Tilt Range	-15° ~90°

Pan Speed	0.1°-90°/s Speed can be configured
Tilt Speed	0.1°-60°/s Speed can be configured
Preset	Support max. 255 presets
Cruise	Support max. 16 cruises. Duration time and cruise speed can be configured
Power Off Memory	Support PTZ Power Off Memory
ILLUMINATOR	
Supplement Light	2pcs Laser Lights + 4pcs high consumption IR Lights + 4pcs white lights
Control Type	3 groups of supplement lights auto trigger by zoom ratio
IR Wavelength	850nm
White Light Color Temperature	6000K-6500K
Supplement Light Range	IR: ≤100m
VIDEO	
Video Compression	H.264 / H.265
H.264 Type	Baseline Profile/Main profile/High profile
H.265 Type	Main Profile
Bit Rate Control	CBR/VBR (50kbps~12288kbps)
ROI	Support 1 self-configure ROI zone; Mainstream/Substream
Privacy Mask	Max. support 4 rectangle mask areas
Max. Resolution	2592*1944@30fps
Main Stream	2592*1944@30fps / 2560*1440@30fps / 1920*1080@30fps / 1280*720@30fps / 720*576@30fps / 640*360@30fps
Sub Stream	1280*720@30fps / 720*576@30fps / 640*360@30fps
Picture Parameter Config	Brightness, Contrast, HUE, Saturation, Sharpness can be configured
AUDIO	
Audio Compression	G.711ulaw/G.711alaw/PCM
Audio Bit Rate	64 Kbps (G.711ulaw/G.711alaw)
Audio Sampling Rate	8 kHz
Audio 3A	Acoustic Echo Cancel (AEC) / Automatic Noise Suppression(ANS) / Automatic Level Control (ALC)
Audio Language	Built-in Chinese/English audio alarm sound
NETWORK	
Protocol	TCP/IP, UDP, RTP, RTCP, RTSP, NTP, HTTP, HTTPS, DHCP, SSL/TLS, FTP, DNS, DDNS, PPPoE, 802.1X, IPv4, IPv6, QoS, WebSocket
Interface Protocol	ONVIF, MWP
Security	Support username / password change, ONVIF password authentication, RTSP password authentication, IP address filtering
OSD	Title, date and time OSD, Support 7 lines self-defined OSD
System Upgrade	Support CMS, Web and online OTA upgrade
IMAGE ENHANCEMENT	
Image Rotation	Support image mirror and flip
Iris Mode	Support auto Iris and manual Iris
Corridor Mode	Support Corridor Mode
AI ISP	Support AI ISP
Anti-Flickering	Support anti-flicker function for complex light environment
Network Disconnect	Support 3 network mode (disconnect reboot / disconnect does not reboot / offline mode)
Web Language	Built-in multiple language
INTERFACE	
Power Interface	1pc power interface; 12VDC~24VAC adaptive
Network Interface	RJ45 Network; 10M/100M adaptive / POE: IEEE 802.3at max 25w

On-board Storage	Built-in Micro SD Card Slot (Max. support 512GB)
Audio Input	1ch audio input (RCA)
Audio Output	built-in speaker + 1ch audio output (RCA)
Alarm Input	1ch alarm input
Alarm Output	1ch alarm output
Normal Event	
Alarm Linkage	Motion Detection
BEHAVIOUR ANALYTICS	
AI Event	Human/Vehicle Intrusion Alarm
Behaviour Analytics (Enable 1 at a time)	
AI Type	Intrusion # Line Cross # Loitering / Enter/Leave
Trigger Type	Human/Vehicle # Human # Human
Detect Speed	≤200ms
Sensitivity	5 level
Detect Areas	Max. 4 areas # 1 area # 1 area
Linkage	Sound / Light / Alarm Output / Platform
Others	Each area support independent alarm linkage # Line Cross Direction # Loitering Time Setup
AI ALGORITHMS (Enable 1 at a time)	
Face Capture	Face Picture/Half body picture optional Support Sound / Light / Alarm Output / Platform
Facial Recognition	Face Picture/Half body picture optional Blacklist/Whitelist Support Sound / Light / Alarm Output / Platform
Absent Alarm	Full Screen Picture Can set time duration that allowed to leave Support Sound / Light / Alarm Output / Platform
Crowd Detection	Full Screen Picture Can set over-load people threshold Support Sound / Light / Alarm Output / Platform
People Count Statistics	Can generate People Count Statistics Bar/Line Chart
OTHERS	
Operational Temperature/Humidity	-30℃~65℃; ≤95%RH
Power Supply	12VDC ~ 24VAC Adaptive & POE: IEEE 802.3at max 25w
Consumption	≤20W
Device Weight	Net Weight: 1.6kg;, Gross Weight: 2.1kg
Materials	Aluminium +ABS
Protection	IP66
Dimension	Φ200mm*250mm (With wall mount bracket) Φ136mm*250mm (Without bracket)

4.5inch 5MP 20X AI PoE PTZ



Support 24V
Support PoE



1ch alarm output
1ch alarm input



1ch audio input
1ch audio output



Support mobile
APP one tap remote
alarm clearing



Facial
Detection



Facial
Recognition



People
Count Statistics



Line Cross



Hard Hat
Detection



Crowd
Detection etc



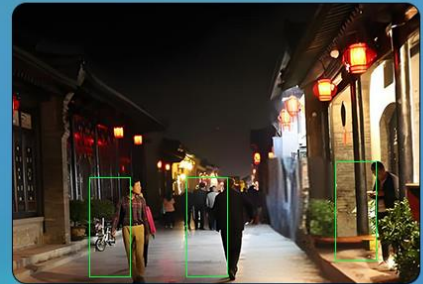
Human/Vehicle
Intrusion Alarm



Loitering



Area Enter/Leave



Dimension

